

Doors™ for use with Windows™ Access Control Software



Doors for use with Windows is a software program that configures and manages an access control system utilizing Keri's PXL-250 and PXL-500 Tiger Controller family. *Doors* makes use of all popular Windows features such as resizing and relocation of windows, drag and drop functions, multiple windows open simultaneously, and "real time" operation.

The software provides the operator an extremely user friendly interface that defines system parameters, manages card and transaction files, sets timing functions, and prepares reports. *Doors* operates under Windows 95, 98, NT, 2000, ME, or XP and is capable of managing a single site via direct connect or modem as well as virtually an unlimited number of remote sites via modem or TCP/IP (ethernet). Video Badging is available as an option.

Keri has designed some great features into *Doors* that make it extremely easy and flexible to learn and use:

Spreadsheet or Dialog Box Interface

For operators who are familiar with Microsoft Excel™, many operations can be performed in spreadsheet format, with simple sorting, block and copy functions.

1	Last Name	First	Card Num.	Access Group	Dept Group	On Off	Event Date
1	Alvarez	Kathleen	1805	Shop/Executive	Manufacturing	ON	8/13/07 9:57
2	Anderson	James	1801	Janitorial	Maintenance	ON	8/13/07 9:57
3	Becker	Kerith	1807	Swing Shift	Assembly	ON	8/13/07 9:57
4	Callahan	Deborah	1813	Shop/Executive	Manufacturing	ON	8/13/07 9:57
5	Johnson	Adam	1811	Managers	Accounting	ON	8/13/07 9:57
6	McMillan	Tara	1803	Managers	Accounting	ON	8/13/07 9:57
7	McMillan	Scott	1812	Day Shift	Engineering	ON	8/13/07 9:57
8	Smith	Robert	1802	Janitorial	Maintenance	ON	8/13/07 9:57
9	Callahan	Rebecca	1806	Managers	Marketing	ON	8/13/07 9:57
10	Hillman	Peter	1813	Surveyor	Assembly	OFF	8/13/07 9:57
11	Thomas	Bill	1804	Swing Shift	Assembly	ON	8/13/07 9:57
12	Thompson	Jeep	1808	Total Access	Executive	ON	8/13/07 9:57
13	Widmer	Lacelle	1809	Day Shift	Assembly	OFF	8/13/07 9:57

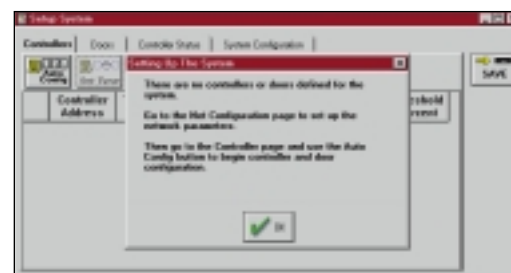
Wizards

Wizards provide the operator a step by step walk-through procedure for setting up access groups.



Auto-Configuration

The software automatically checks the network and configures itself according to the connected hardware, greatly simplifying the system setup procedure.



1530 Old Oakland Road, Suite 100
San Jose, CA 95112 USA
(800) 260-5265 • (408) 451-2520 • Fax (408) 441-0309
e-mail: sales@kerisys.com web: www.kerisys.com

DATA SHEET | Doors™ for use with Windows™
Access Control Software

Doors™ for use with Windows™

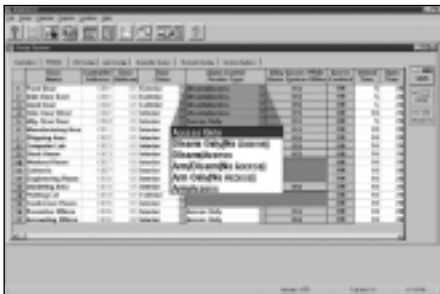
Access Control Software

- No dedicated PC required, runs in the background with other applications
- PC does not need to be on or connected, only required during uploading, downloading, or monitoring
- Extensive Help file
- Full Windows feature set, including multiple windows open simultaneously, window resizing and relocating, drag and drop functions, cascading and tiling, no DOS boxes
- Custom communications protocol to reduce or eliminate general protection faults (GPFs) and crashes
- Remote multiple site monitoring with dial up, global and site specific card enrollment, and reporting
- Configurable automatic download of controller event buffer
- 32 system operators, each with password protection and configurable privileges
- 32 time zones, each with 4 start and stop intervals
- 3 holiday schedules, each with 32 user definable holidays, on-board calendar for programming ease
- Unlimited number of Access Groups
- 6 extra sortable, user definable text fields for individual cardholder information in addition to last name, card number, access group and department group
- Alarm system control and reporting with NetworX (Caddx) NX-8E Alarm Panel
- Future card activation and expiration

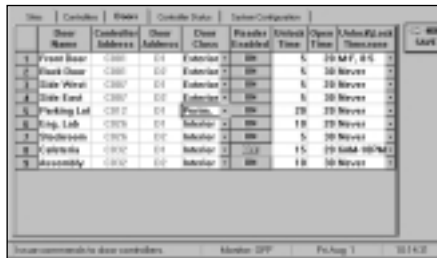
- PC Requirements
- 90 Mhz Celeron or Pentium Processor
 - Mouse and Keyboard
 - 128 MB RAM, 20GB Hard Drive
 - SVGA Monitor Graphics Card
 - CD-RW CD-Burner
 - Available Com Port
 - Windows 95, 98, 2000, ME, XP, or NT 4.0

NEW FEATURES!

Alarm Control



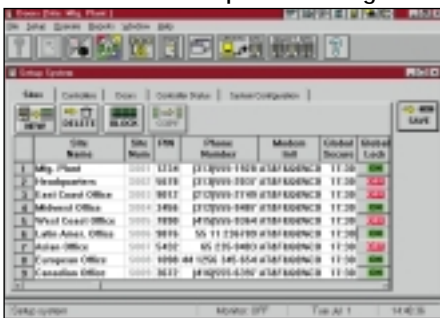
Door Setup



Input/Output Links



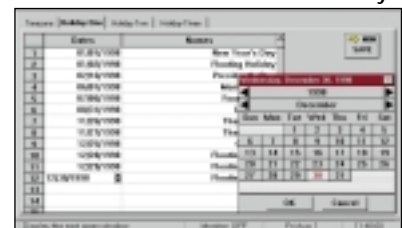
Multiple Site Management



Manual Door Operation



Holidays



Presented By:

