

EA TRIPOD ELITE

The EA Tripod Elite turnstile incorporates the functionality of a tripod turnstile with the style of our Swing Lane speed gates. It's modern contemporary design using glass and stainless steel sets this tripod style turnstile aside from any other on the market. The cabinet housing is offered in a choice of options including polished or brushed stainless steel or powder coated steel. The transparency of the glass side panels highlighted by LED illumination give the EA Tripod Elite turnstile the sense of an opulent entrance solution. The LED's illuminating the glass side panels change colour depending on the entrance mode. The EA Tripod Elite turnstile top panel is made from black glass as standard (other options are also available) and the top panel is fitted with an LED display with space for an optional card reader.



When power goes OFF both directions are free.

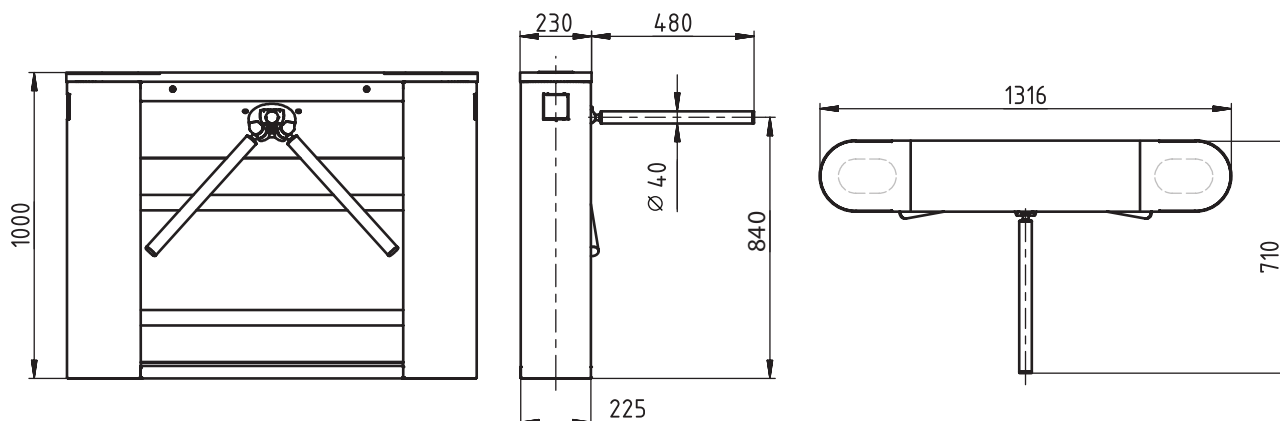
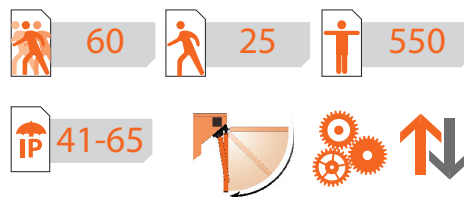
Controlled by:  Access control system  Push button

TECHNICAL SPECS:

Width, mm	710
Length, mm	1316
Height, mm	1000
Weight, kg (not more)	98
Mechanism	Motorized
Standard housing	Brushed AISI 304
Available housing	Brushed SS AISI 316 Polished SS AISI 304 Polished SS AISI 316 Powder coated RAL

ELECTRICAL SPECS:

- Voltage:
 - from the AC (100-240)V, 50/60Hz;
 - from a DC source 12 V.
- Maximum power consumption 55 W per pass.



EA Group (UK) Limited, Units 20-21, Bookham Industrial Park, Church Road, Bookham, Surrey, KT23 3EU

Telephone: 01372 459536 Fax: 01372 454778 Website: www.ea-group.co.uk

PART OF THE ELECTRO AUTOMATION GROUP OF COMPANIES

REGISTERED IN ENGLAND NO. 3094251 VAT NO. 664124937

